



UNICOS hardware configuration at GSI

Index

1	Document versions	2
2	UNICOS relevant configuration	3
3	GSI relevant configuration.....	6

1 Document versions

Version	Date	Author	Changes
V1.0	19.01.2022	W.Bach	<ul style="list-style-type: none">• First version of the hardware configuration
			<ul style="list-style-type: none">•

2 UNICOS relevant configuration

The following configuration is needed to set to guarantee an establish communication to the SCADA.

1. Hardware configuration

a. Time of day

i. Local time: (UTC) Coordinated Universal Time

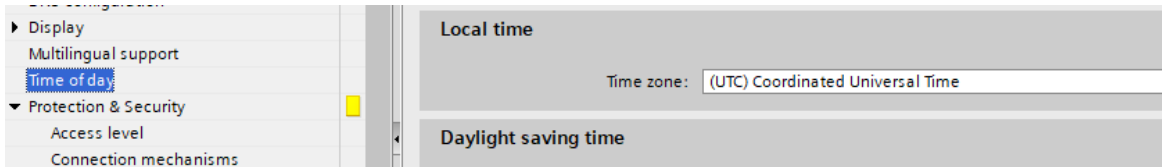


Figure 1: Local time: (UTC) Coordinated Universal Time

b. Protection & Security:

i. Access level: Full access (no protection) (Fan say Read access)

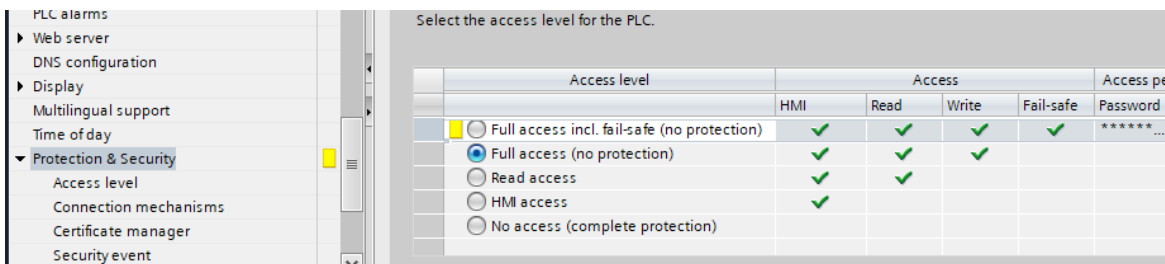


Figure 2: Access level: Full access (no protection)

c. Protection & Security:

i. Connection mechanisms:

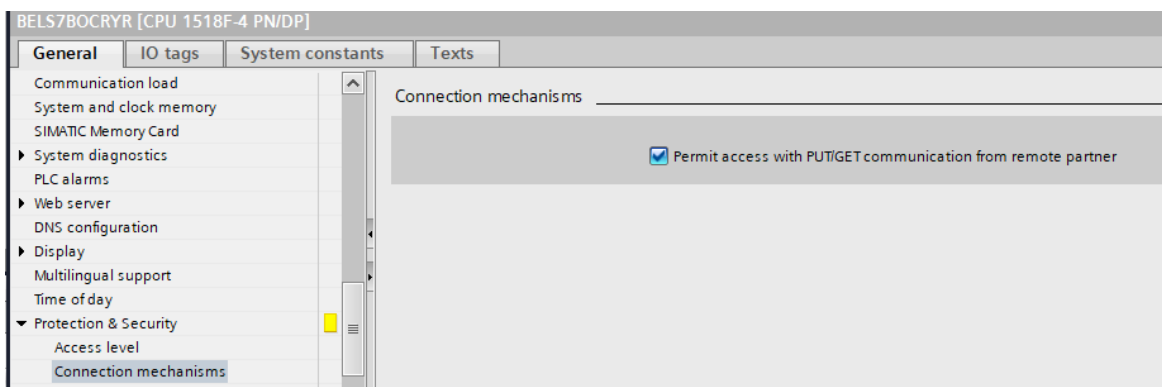


Figure 3: Connection mechanisms:

2. Languages & resources

a. Project languages:

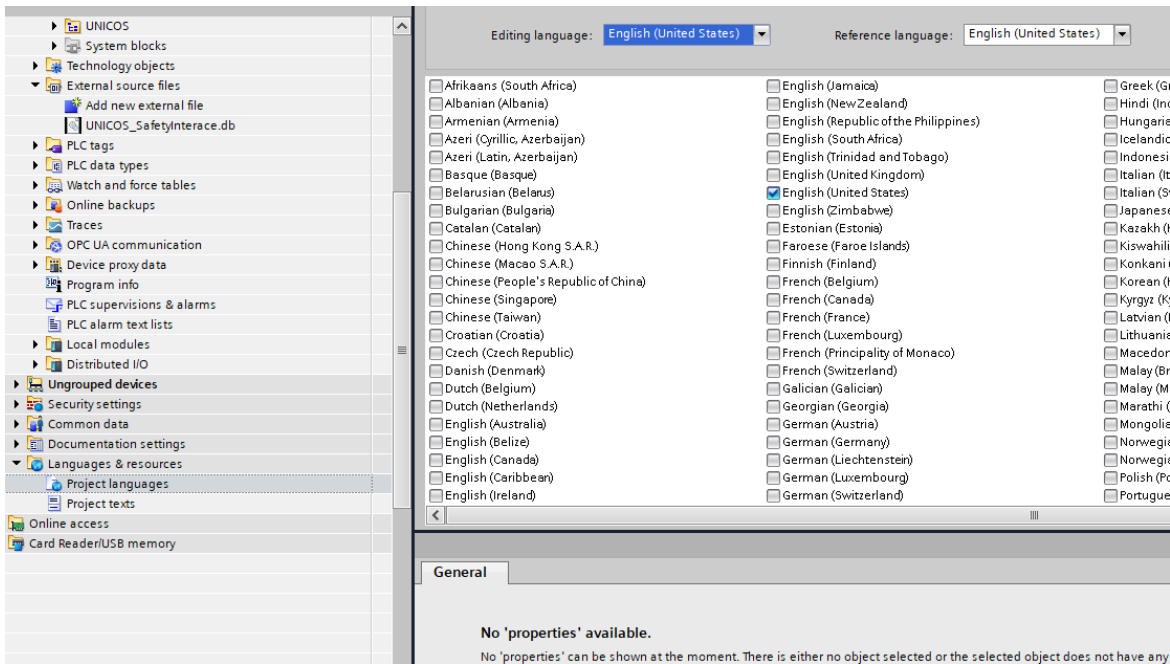


Figure 4: Project languages

3. Options

a. Settings

i. General

1. Mnemonic: International

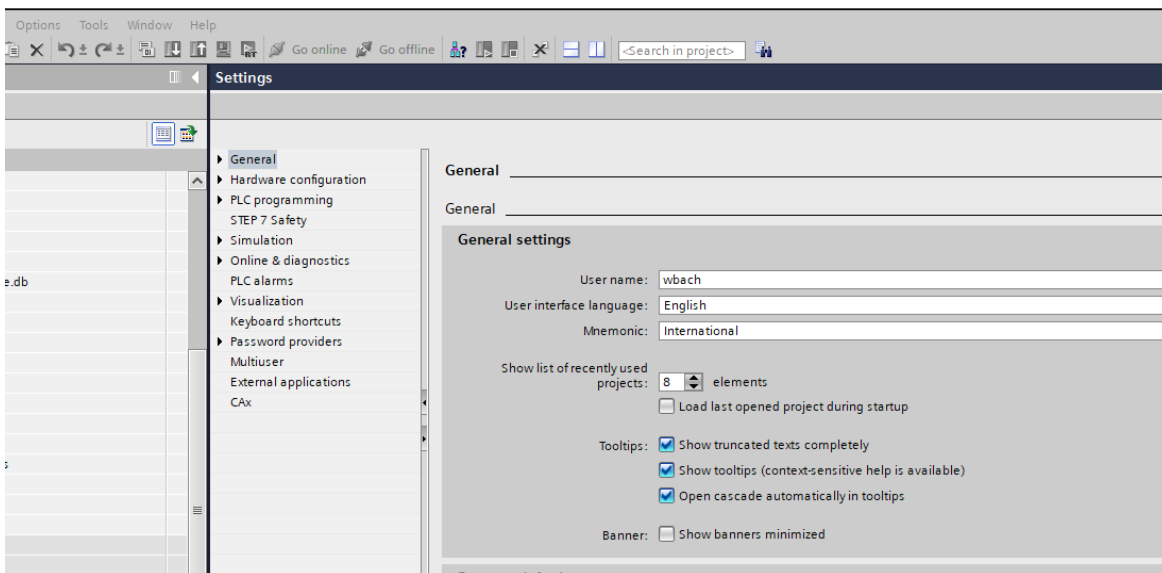


Figure 5: Mnemonic: International

4. Connection

a. Address details:

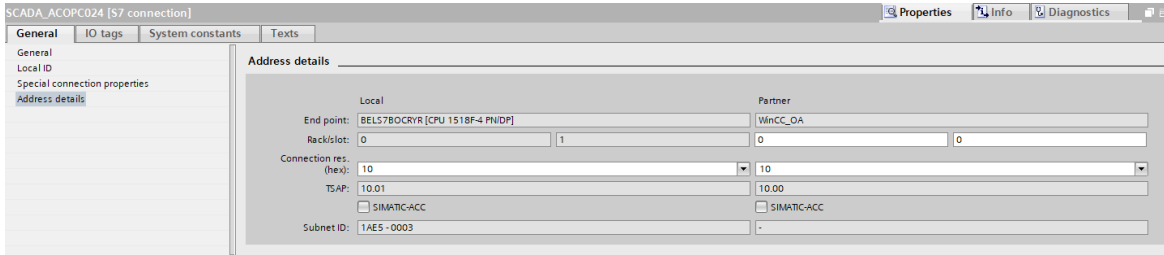


Figure 6: Address details

b. Special connection properties:

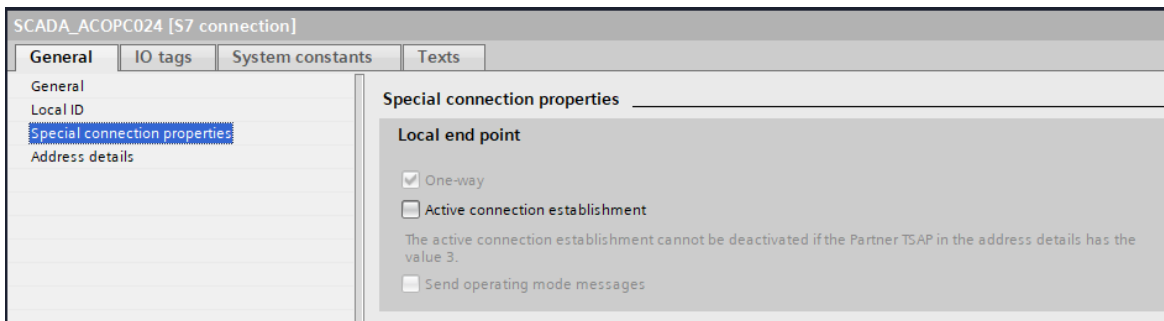


Figure 7: Special connection properties

c. Local ID:

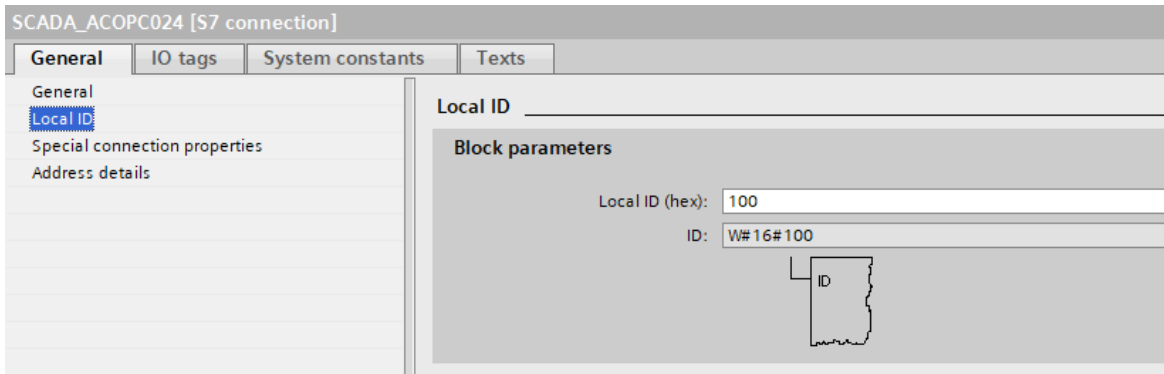


Figure 8: Local ID

d. General:

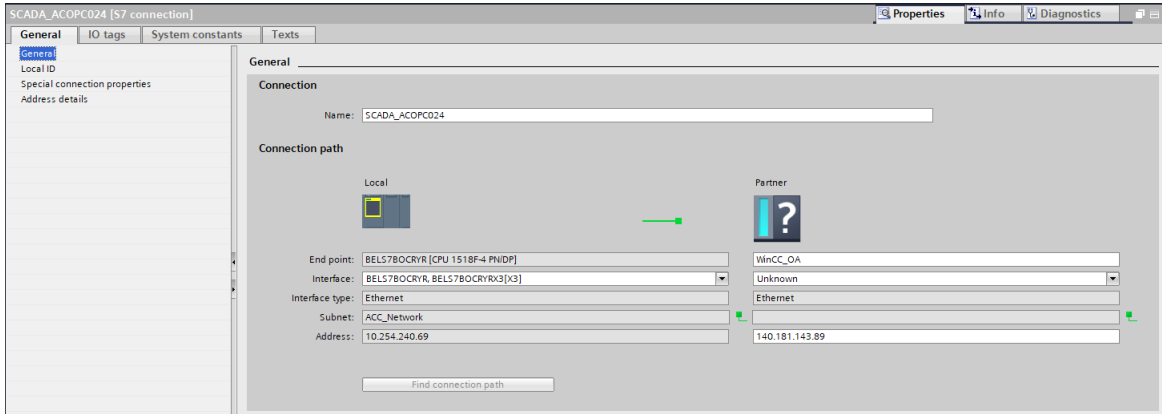


Figure 9: General

3 GSI relevant configuration

GSI projects based on UNICOS is using some standardized hardware settings.

1. For the communication we use some alternative servers:






	Local connection name	Local end point	Local ID (hex)
	SCADA_ACOPC024	 BELS7BOCRYR [CPU...	100
	SCADA_Linux_Virtuell	 BELS7BOCRYR [CPU...	103
	SCADA_BELPC172	 BELS7BOCRYR [CPU...	102
	SCADA_ACOPC046	 BELS7BOCRYR [CPU...	101

Figure 10: Alternative SCADA server

At the moment (Date: 20.01.2023) we use as Main SCADA the machine ACOPC024 for the GSI related project. Alternative machines are BELPC172 (Test_SCADA), ACOPC046 (TVS) and a virtual Linux machine.

The IP-Address:

1. ACOPC024:
 - a. IP: 140.181.143.89
 - b. Local connection hex: 10
 - c. Local ID: 100
2. ACOPC046:
 - a. IP: 140.181.146.250
 - b. Local connection hex: 11
 - c. Local ID: 101
3. BELPC172:
 - a. IP: 140.181.65.85
 - b. Local connection hex: 12
 - c. Local ID: 102

4. Linux_machine:
 - a. IP: 10.254.240.62
 - b. Local connection hex: 13
 - c. Local ID: 103

The other setting for the communication is described in UNICOS relevant connection settings.

2. NTP-Server:

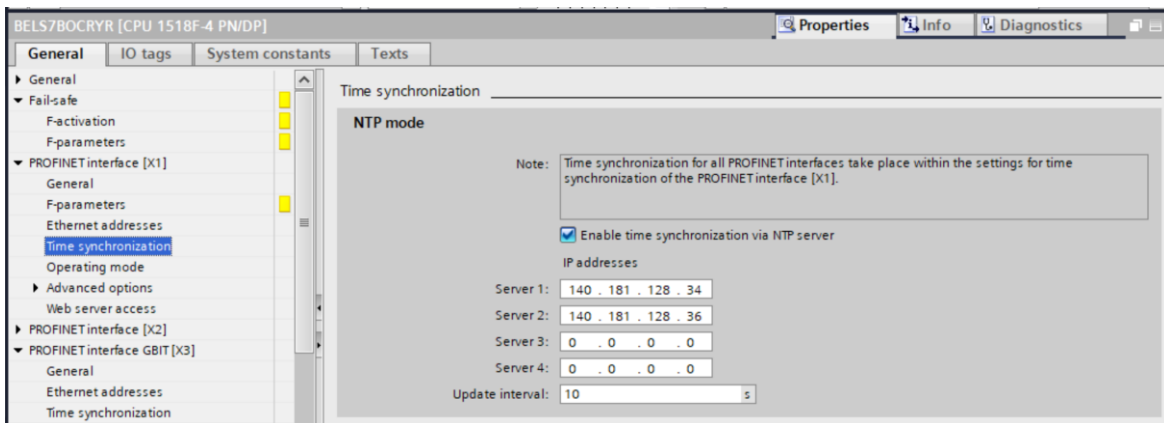


Figure 11: NTP server

All projects set in the ACC-Network are reaching the following NTP-Server below.