



Password administration for TVS

Index

1	Document versions.....	2
2	Introduction	3
3	Password administrator.....	3
3.1	Password rules.....	5
4	Users.....	5

1 Document versions

Version	Date	Author	Changes
V1.0	06.10.2022	W.Bach	<ul style="list-style-type: none">• First version of the password administration
V1.0.1	03.11.2022	W.Bach	<ul style="list-style-type: none">• Changed visualization of unlimited users• Bugfix: Password panels

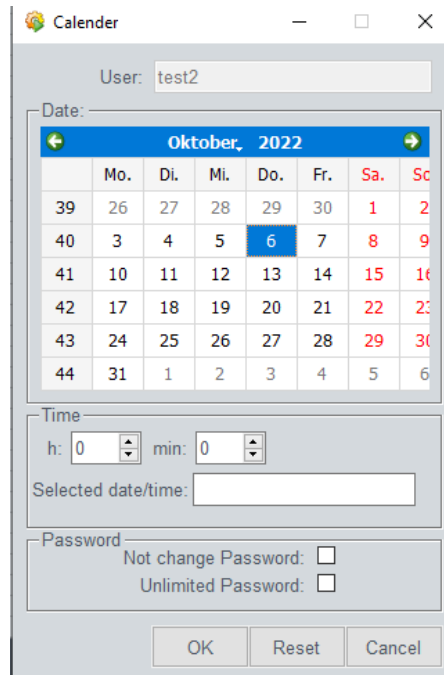


Figure 2: Calendar

In this panel the end date for the user can be changed by click in the calendar. In the frame *Time*, the password administrator can also choose the hour and minute for the end time of the password.

In the frame *Password* the administrator user can decide, if the user should get a unlimited password and not only to extend the password, also to change the password. Therefore, after a click on the button Ok, a password change panel would open.

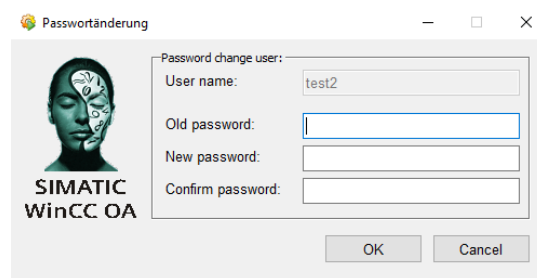


Figure 3: Password change for a user

With the button Reset on the calendar, the end date for the password would disable. In the mode, the user would be requested to change the password and contact a password administrator.

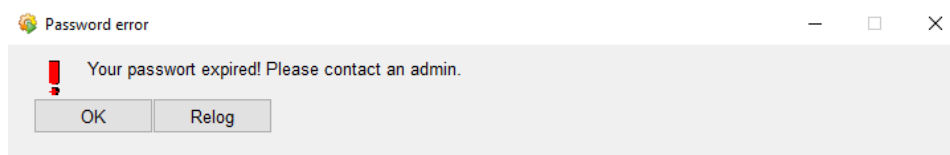


Figure 4: Password error

After this message it is not possible to control the TVS anymore and this error message would reopen after a termination. Only a relogin to a administrator is possible to control the TVS control system.

3.1 Password rules

The password must have the following rules to change the password:

- Upper-case letter
 - A","B","C","D","E","F","G","H","I","J","K","L","M","N","O","P","Q","R","S","T","V","W","X","Y","Z"
- Lower-case letter
 - a","b","c","d","e","f","g","h","i","j","k","l","m","n","o","p","q","r","s","t","v","w","x","y","z");
- Number
 - 0","1","2","3","4","5","6","7","8","9"
- Special character
 - "!", "\$", "%", "&", "/", "(", ")", "=", "?", "*", "+", "#", " ", "-", "_", ";", ":", " ", "@", "?"
- Longer than 8 signs
- Not the old password

4 Users

Non-administration users can only work till the end time of the password. After the end time an error message will remind the user to connect a password administrator.

This user cannot change the password and will get the password from password administrator.