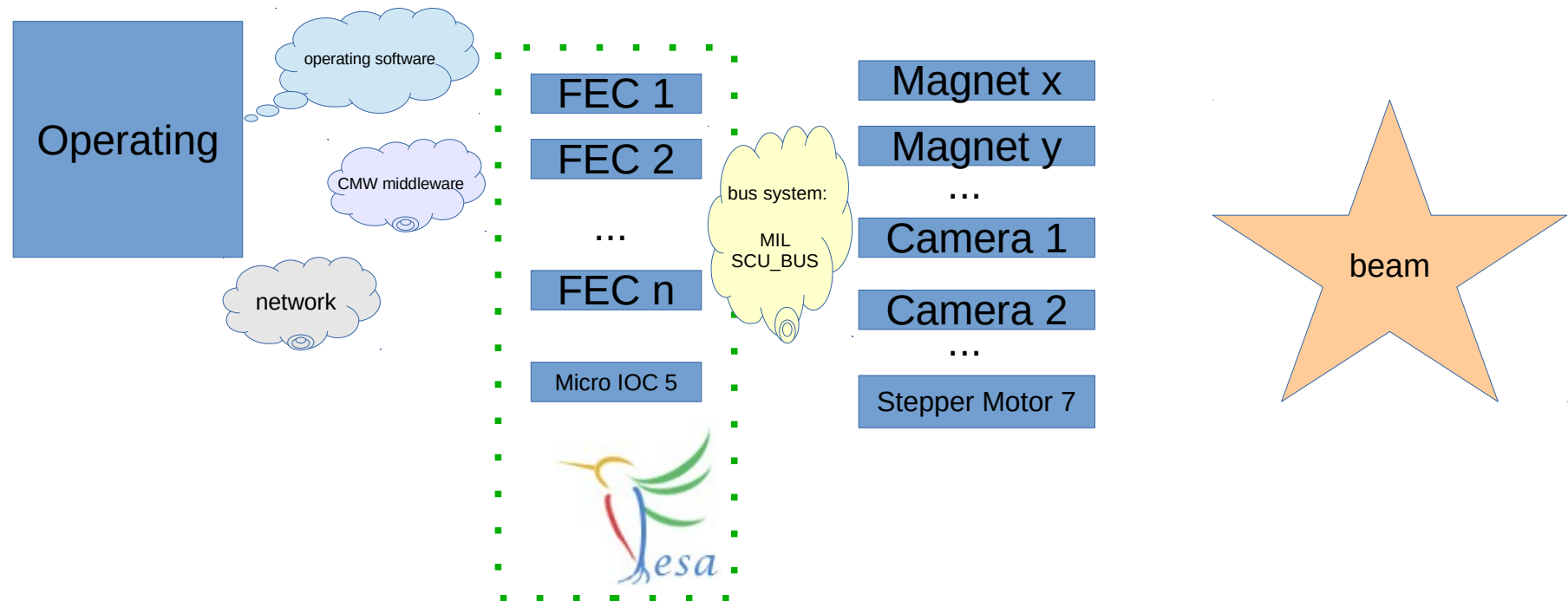


FESA3

Introduction

What's this?

- FESA: **F**ront-**E**nd **S**oftware **A**rchitecture
- Framework to design, test, develop and deploy standardized device software to run on FECs



- FESA3 Wiki: <https://www-acc.gsi.de/wiki/FESA/WebHome>
- Latest Release:
https://www-acc.gsi.de/wiki/FESA/Fesa3_501
- Changes:
<https://www-acc.gsi.de/wiki/FESA/FESA3ReleaseHistory>
- What? <https://www-acc.gsi.de/wiki/FESA/WhatIsFESA>
- Mailing-Liste: fesa-news@gsi.de

Help?



- Support: fesa-support@gsi.de
- FESA3-Backoffice: BR3 2.162
- Other FESA developers: FESA3 Forum

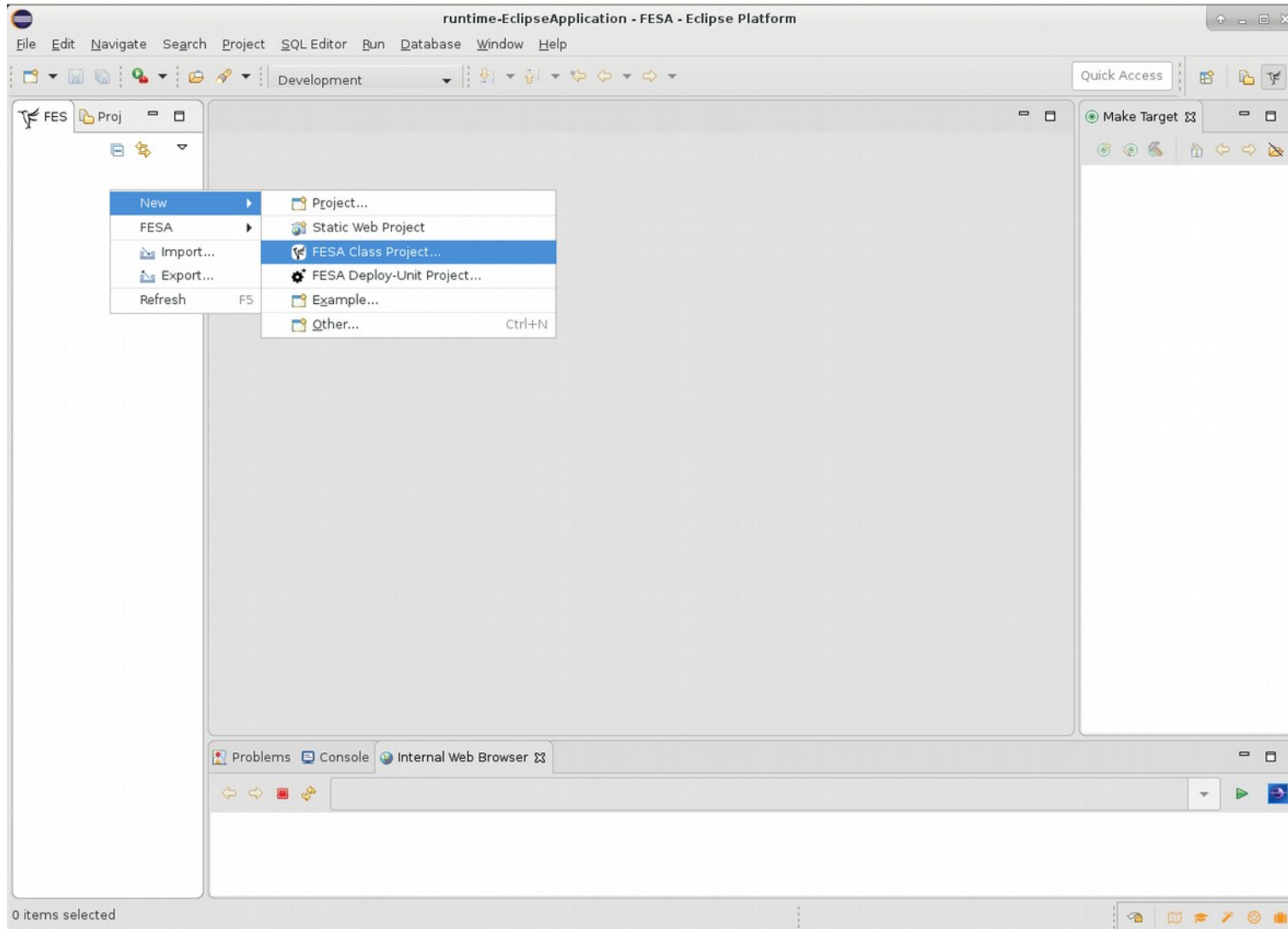
<https://www-acc.gsi.de/wiki/FESA/Intern/FESA3ForumTopics>

Development Environment



- asl-cluster asl740 - asl744
- member of fesa linux group
- eclipse-neon&
- plug-in update site:
 - <https://www-acc.gsi.de/data/eclipse-neon/fesa>

Basic FESA Project Creation



Basic FESA Project Creation



New FESA Project
Create a new FESA Class project.

Project name:

Share project in repository

Version
Select the desired FESA framework version and the product version.

FESA Eclipse plug-in version:

FESA framework version:

- 5.0.1
- 5.0.1
- 4.3.1
- 4.2.0
- 4.0.0

Latest FESA FWK Release

Template selection
Select the desired template for the newly created design class.

emptyTemplate

GSIClassTemplate

Custom

Create default deploy-unit project

For productive FESA software

Basic FESA Project Creation



- LIVE Demo
 - FWTimer
 - Coffee machine
- <https://git.gsi.de/fesa-workshop>

Coffee



- Implementation of a coffee machine with FESA3
 - turn on / off
 - coffee type (Espresso, Cappuccino, Black, Latte Macchiato, Mokka, ...)
 - coffee strength
 - grind beans
 - water temperature / pressure
 - cup fill status
 - cup size S, M, L
 - last machine state / settings
 - milk, sugar, coffee spices
 - what about tea?
 - cleaning cycle
 - ...

How to proceed?



- Further FESA3 topics
 - Subsets
 - Logging
 - Event digestion / RT stuff
 - ?
- Next date for training?
- Next FESA Forum: Wed, 21.11.2018 10:30